

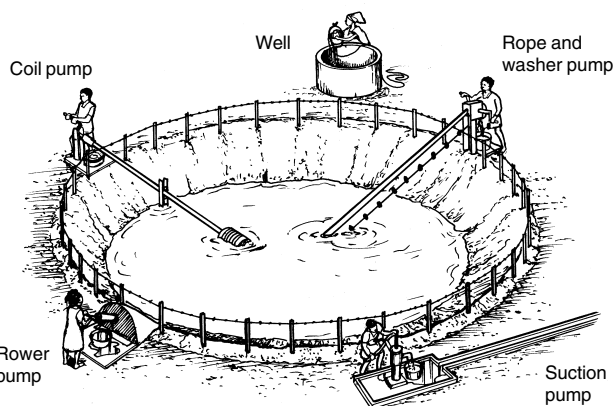
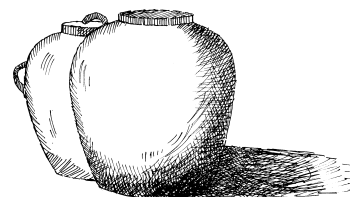
55. Water source selection

Water is essential for life, but for many people, the quantity of water available may be minimal, and the water may be of poor quality. This Technical Brief outlines some of the issues which need to be considered when planning improvements to supplies, to ensure that the most appropriate sources of water are selected.

There are three types of water source: ■ **rainwater** ■ **surface water** and ■ **groundwater**

Rainwater

Collecting rainwater from either an existing roof structure or a ground catchment area can provide a useful supplementary source of water even if it is not used as the main supply. Storage tanks are usually required to make the best use of rainwater.



Surface water

When rain falls to the ground it becomes *surface water*, where it may move across the ground in the form of streams or rivers, or remain in one place in the form of ponds or lakes. Surface water is easily polluted and can be affected by wide seasonal variations in *turbidity* ('muddiness') and flow. Variations in turbidity present a challenge for the effective operation of treatment processes, while variations in flow affect the location and design of abstraction structures. Surface water, however, is often the easiest to access (see illustration).

Groundwater

Some surface water sinks into the ground and becomes *groundwater*. Here it can remain for a long time in an *aquifer* — spaces underground which can hold water because the surrounding earth and rock is *impervious* (does not let water through).

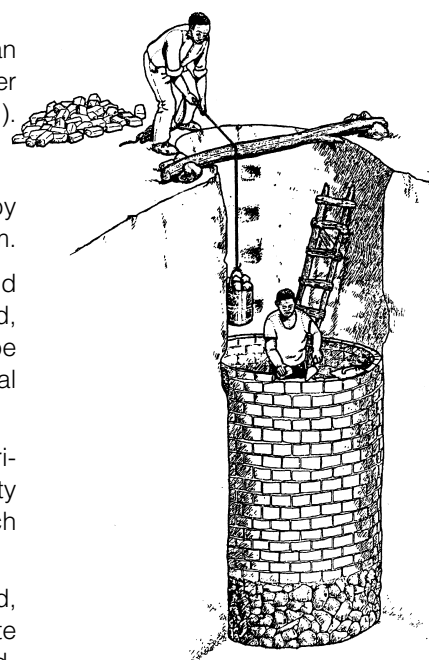
Groundwater may be obtained in several ways:

Water from mountain springs can often be transmitted to areas of demand by gravity, limiting the operation and maintenance requirements of a supply system.

Shallow wells can also provide a supply system with minimal operation and maintenance requirements — particularly if they are well-constructed, protected, and fitted with a handpump. For larger supplies, diesel or petrol pumps may be used in place of handpumps. Shallow wells can often be constructed using local techniques and labour.

Shallow or deep boreholes usually require drilling equipment and an experienced drilling team, but they can provide high-yield supplies of good-quality water. Groundwater, however, may be affected by high levels of chemicals, such as fluoride or chloride.

Locating groundwater can be difficult. The presence of existing wells with good, stable yields, other positive hydrological features, or information from satellite images can highlight groundwater potential but, following this, extensive field-trials are usually required to determine acceptable borehole locations.



Lining a hand-dug shallow well

Water source selection

Selecting a water source for a community supply system requires careful consideration of the existing sources in use are the most appropriate and only require minor improvements.

Socio-political and cultural considerations

Socio-political and cultural considerations are as important, if not more so, than the technical requirements for development. If the water supply is not culturally appropriate, and causes security difficulties or restricts access for certain groups such as women or disabled people, the benefits of the new system will be limited.

Women and water

Communities may use a single source or several sources of water for different needs such as drinking, washing clothes and watering crops. It is often the women and children who are most involved in water collection and its use. They are likely to have the most knowledge about existing sources, and are the people most likely to benefit if new supplies are developed. They are also the most likely to suffer if a new water-supply system is not appropriate to the needs of a community. It is essential, therefore, that women and children, as well as men, should be involved in every stage of a water-supply project.

Participative approaches should be used when selecting water sources and designing village-level supply systems. If some sections of the community are not involved and their views are not taken into account, the water-supply system is likely to be under-used and may easily fall into disrepair. People may revert to their old water sources which may be more polluted.

Water committees

Water committees are set up in many areas to manage water-supply systems. Care must be taken to ensure that all groups in the community are represented and can make their concerns and needs heard and understood. It is often difficult to achieve this. Women, for example, may form part of a water committee but they still may not have a voice within it because of cultural or social conditions which prevent them from speaking in public. Innovative approaches are required to ensure that representatives of as many groups as possible can participate equally.

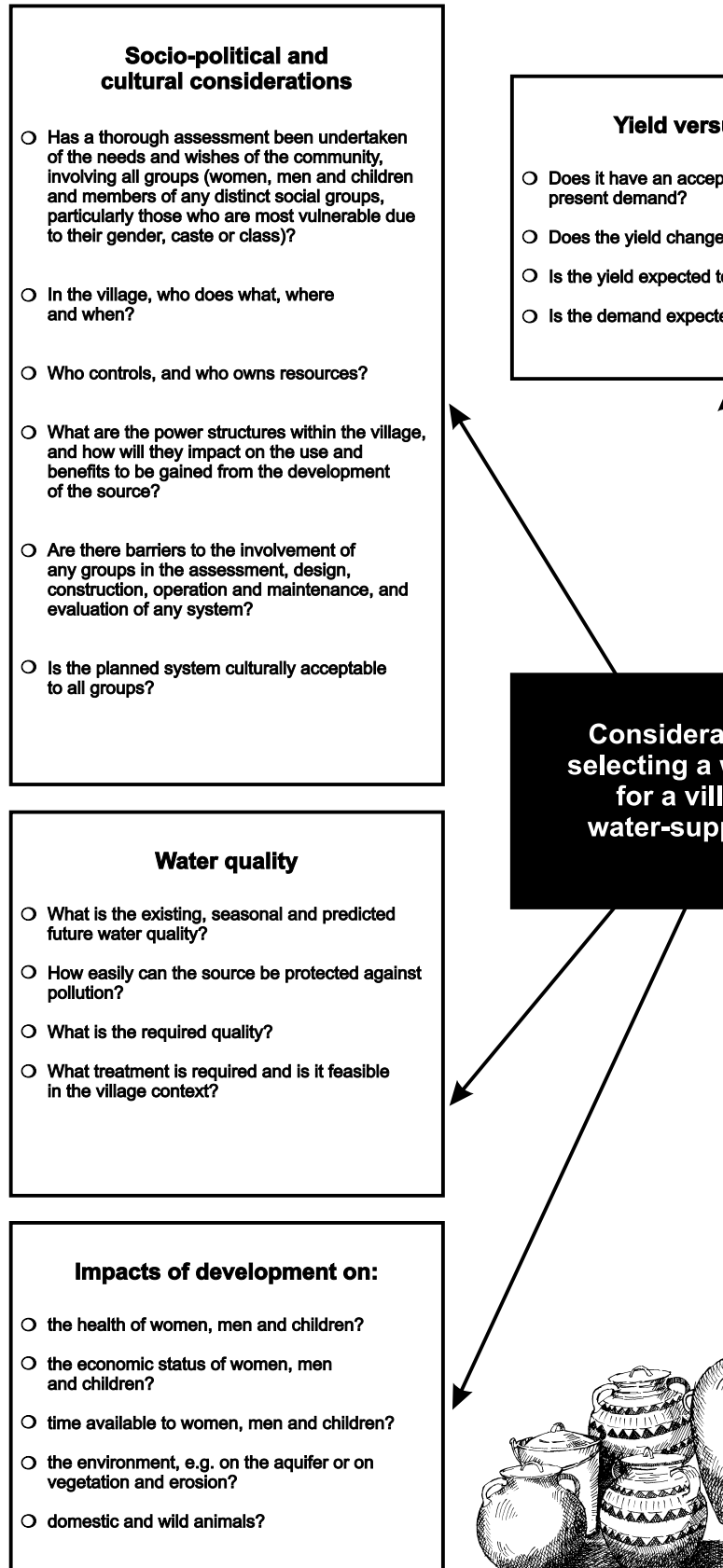
Operation and maintenance

Care must be taken when identifying personnel both to undertake training, and to be responsible for operation and maintenance.

It is well documented that women often make the most conscientious maintenance workers but are often expected to undertake the task free of charge in situations where men would normally be paid. Care must be taken, therefore, to ensure that both women and men are consulted on the matter, that they are willing to undertake the task, and that they are compensated in a way which is fair and appropriate.

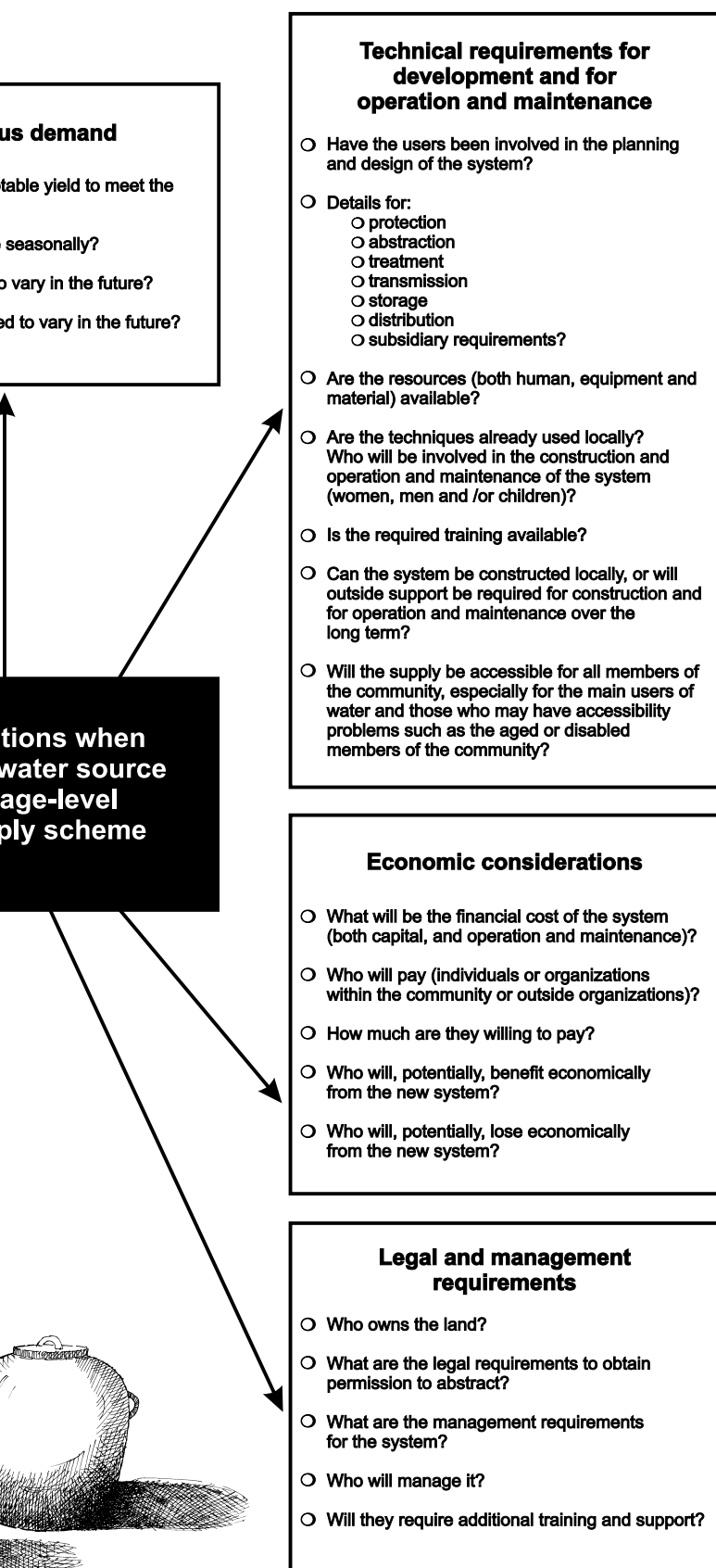
Yield versus demand

The yield must be adequate. If a more convenient supply is developed, then consideration must be given to the potential increase in demand and to the possible migration of outsiders into the community, particularly in areas where water is scarce.



Water source selection

on of a range of factors. The illustration below highlights some of these. It may be that
ment. In other cases, a new source or sources may have to be developed.



Water quality

All water is susceptible to contamination. It may accumulate contaminants from the air, the ground, or from rocks. Some of these contaminants, such as low levels of certain minerals or compounds, are not harmful to health, whereas others, such as pathogens, may be.

The water quality must also be acceptable and treatment methods suited to the community concerned. What local treatment methods, if any, are already being used in the area? Can they be used in the new system? The benefits of using improved sources of water will be increased if the community practises good sanitation and hygiene. Will their current behaviour pollute the water source or reduce the benefits of an improved supply? Would additional resources be required to help reduce these risks? Some water-quality problems such as high fluoride levels are very hard to treat and have serious health implications, whereas others, such as turbidity, are usually easier to deal with.

Technical requirements

The development of the source must be technically feasible, and the operation and maintenance requirements for the source abstraction and supply system must be appropriate to the resources available. If the supply system cannot be operated and maintained either by the villagers themselves or the organizations or institutions within the area, then the systems are likely to be misused or fall into disrepair.

Economic considerations

Care must be taken to ensure that funds are available for both the construction and the operation and maintenance of the system over the longer term. Who will pay, how will they pay, and how much will they pay? Who will manage and maintain the system, and who will collect the funds? From whom will the resources be obtained and how will they be secured?

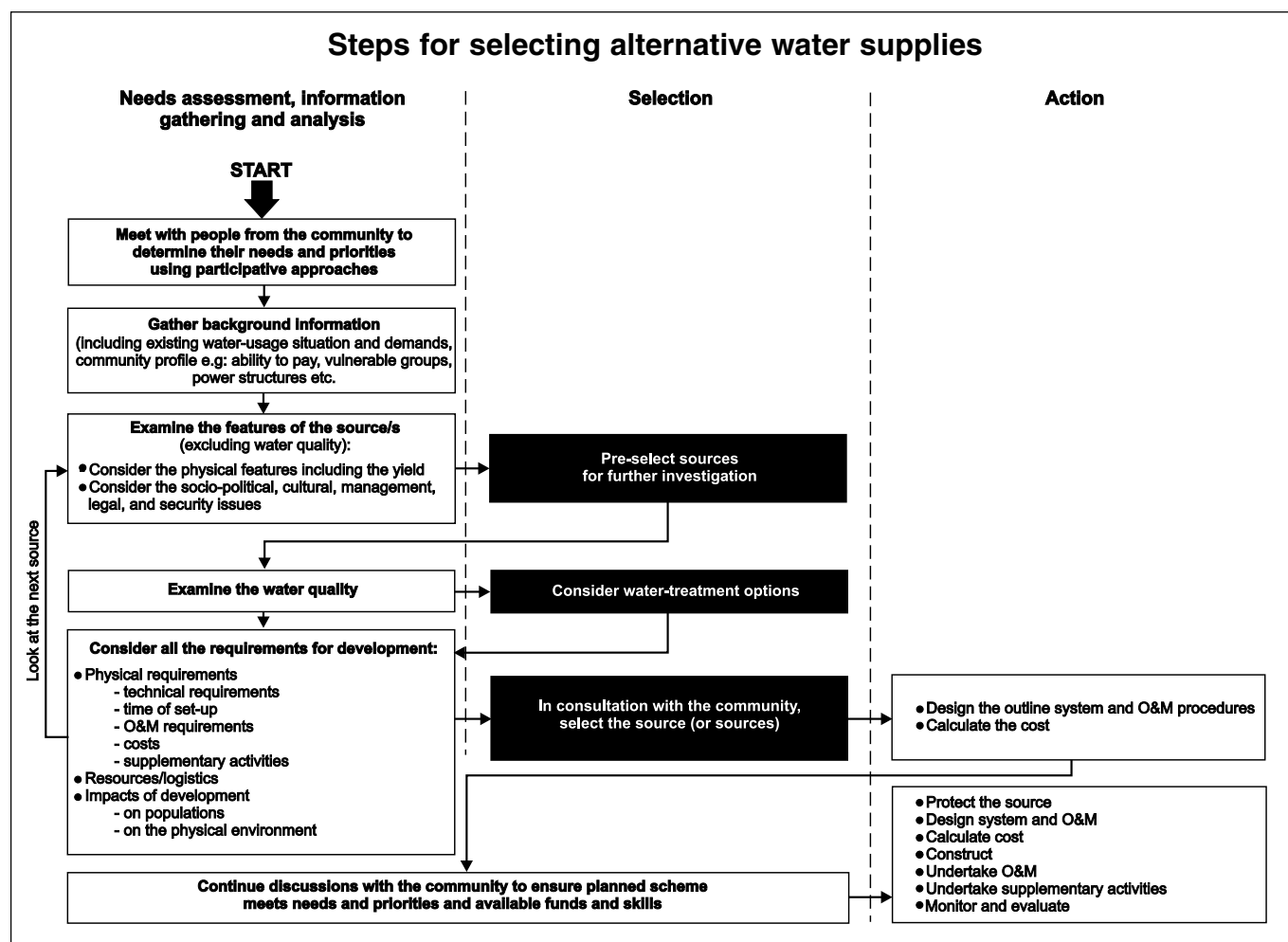
Legal and management requirements

Current ownership of the land and the legal requirements of obtaining permission to abstract are also factors to consider when selecting a source. Sources on private land may cause access problems for certain groups which may not be apparent at the outset. The consequences of siting decisions must be considered carefully.

Impacts of development

The use of a particular water source will have impacts on the people who use it, on animals, and on the environment. The impacts on people may be positive or negative, and may be related, amongst other things, to health, economic status or time. If a surface-water source is used, there may be impacts on remote users and, likewise, if wastewater enters surface-water sources, there may be similar impacts. Impacts on the environment may include loss of vegetation, erosion, or the draining of an aquifer.

Water source selection



Further reading

- Almedom, A. and Odhiambo, C., 'The rationality factor: Choosing water sources according to water uses', *Waterlines*, Vol.13, No.2, IT Publications, London, 1994.
- Brikké, F., Bredero, M., de Veer, T., and Smet, J., *Linking Technology Choice with Operation and Maintenance for Low-Cost Water Supply and Sanitation*, IRC International Water and Sanitation Centre / World Health Organization / Water Supply and Sanitation Collaborative Council, Geneva, 1997.
- Cairncross, S., and Feachem, R., *Small Water Supplies*, Bulletin No. 10, Ross Institute, London, 1978.
- House, S.J. and Reed, R.A., *Emergency Water Sources: Guidelines for selection and treatment*, Water, Engineering and Development Centre (WEDC), Loughborough, 1997.
- IRC (1994a) *Together for Water and Sanitation: Tools to apply a gender approach*, Occasional Paper Series 24, IRC International Water and Sanitation Centre, The Hague, 1994.
- IRC (1994b) *Working with Women and Men on Water and Sanitation: An African field-guide*, Occasional Paper Series 25, IRC International Water and Sanitation Centre, The Hague, 1994.
- ITDG Water Panel, 'Guidelines on the planning and management of rural water in developing countries', *Waterlines*, Vol.7, No.3, IT Publications, London, 1980.

Prepared by Sarah House, Bob Reed and Rod Shaw



WATER AND ENVIRONMENTAL HEALTH AT LONDON AND LOUGHBOROUGH (WELL) is a resource centre funded by the United Kingdom's Department for International Development (DFID) to promote environmental health and well-being in developing and transitional countries. It is managed by the London School of Hygiene & Tropical Medicine (LSHTM) and the Water, Engineering and Development Centre (WEDC), Loughborough University.

Phone: +44 1509 222885 Fax: +44 1509 211079 E-mail: WEDC@lboro.ac.uk <http://www.lboro.ac.uk/well/>